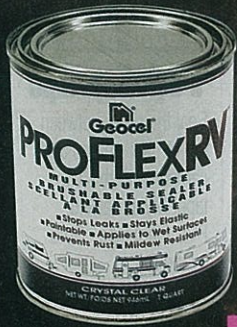


Page 186



Page 189



Page 191



Page 193



Page 199



Page 202



Grey Putty Tape

A heavy Grey mastic, flexible putty tape. Non-hardening and pliable. For use under molding, around windows, doors and vents. Waterproofs overlapping metal seams. Sold by the case.



180-1 5631 1/8" x 3/4" x 30' 20 Per Case

CARDED

0180-13 0180013 1/8" x 3/4" x 8' Roll Carded



404 Grey Butyl Tape

Tapeseal 404 is an extruded gray butyl rubber tape sealant. It is tough, rubber, pressure sensitive mass, which features excellent adhesion to a variety of surfaces. It is currently being used in architectural applications where its high adhesion to glass, and to metal make it an ideal glazing and sealing tape. It will not sag or flow when tested at temperatures up to and including 250 degrees F.

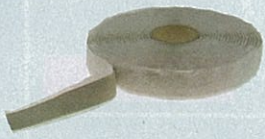


180-4 404 1/8" x 3/4" x 30' 20 Per Case



404 White Butyl Tape

Tape Trimmable (180) Tru-Seal is a non-hardening, off-white butyl elastic material formulated to seal properties to metal, glass and plastic lap points. Adhesion is increased with time assuring a long and permanent seal. Seals well on irregular surfaced material. 16 Per Case



180-8 404 1/8" x 1" x 30' 16 Per Case



303 Combination Butyl/Putty Tape

Heavy duty industrial grade tape seal. Sold by the case.



180-6 303 1/8" x 3/4" x 30' Roll, 20 Per Case

180-7 303 3/16" x 1" x 30' 16 Per Case

180-9 303 1/8" x 1-1/2" Putty Tape



202 Putty Tape

Tapeseal 202 is a general purpose, low cost, non-drying, tacky, putty tape with excellent adhesion to most clean, dry surfaces. It is supplied in extruded rolls with a strippable backing. It will not sag, or run out of joint and is used for providing effective seal alone or in combination with other materials.



180-2 202 1/8" x 3/4" x 30', 20 Per Case

180-3 202 1/8" x 1-1/2" x 30', 12 Per Case

180-5 202 1/8" x 1" x 30' 16 Per Case

CARDED

0180-13 1/8" x 3/4" x 8'-Carded

0180-113 1/8" x 3/4" x 8' W/Screws, Carded

0180-33 1/8" x 1-1/2" x 8', Carded

Duct Tape

Weather resistant duct tape is excellent for many projects. 2" x 60 yard silver duct tape.



181-2 59214 Duct Tape, 2" x 60 Yards



Gorilla Tape

Duct tape is made for smooth, even, predictable surfaces. How many of your projects can be described that way? That's why we invented Gorilla Tape. Made to stick to rough, uneven, unforgiving surfaces like wood, stone, stucco, plaster, brick and more. To form a lasting bondtape needs to have sticking strength, flexibility and the ability to conform. See why Gorilla Tape is in a league of its own: Double Thick Adhesive -fills up the gaps in rough uneven surfaces for super strong bite. Strong Reinforced Backing - the tight weave makes Gorilla Tape extra strong, but you can still rip it straight and easy. Tough All-Weather Shell - for the toughest jobs in the toughest conditions.

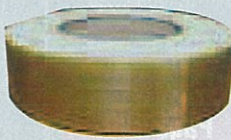


181-3 6035120 Gorilla Tape



Filament Tape

The first choice for all the usual ways of securing shipments and for bundling long objects as well as for reinforcing carton closures. Tesa filament tape is distinguished by its extremely low stretching, very high resistance to tearing and specially developed adhesive mass systems.



182-1 369CL 3/4" x 60 Yards Filament Tape



Blue Masking Tape

Blue masking tape fills needs for hundreds of uses such as for paint edging, holding, bundling, light packaging, sealing etc.



184-1 BT34180 3/4" x 60 Yards

184-2 BT1180 1" x 60 Yards

184-3 BT15180 1-1/2" x 60 Yards

184-4 BT2180 2" x 60 Yards



NEW

Masking Tape

General purpose masking tape fills needs for hundreds of uses. For paint edging, holding, bundling, light packaging, sealing etc.



184-5 BT3180 3"X 180' Masking Tape

Foam Seal Truck Cap Tape

Seal the seam between top of pick-up bed and camper with this cap tape. Mylar backed, PVC foam tape. Sold by the roll.



183-1 187015006 1-1/2" x 3/16" x 30', 20 Rolls Per Case

183-2 375015006 1-1/2" x 3/8" x 30', 20 Rolls Per Case

183-3 375020 2" x 3/8" x 30', 20 Rolls Per Case

Foam Seal

Polyurethane Weather Stripping

Easy to apply, self adhering, weather-stripping protects, seals, cushions, insulates, silences rattles and fills voids. Has countless uses.



186-1 CG570PSA 3/16" x 1/2" x 17'

186-2 CG570PSA 3/8" x 3/4" x 17'

Foam Seal

Vinyl Foam Weather Stripping

Easy to apply, self adhering, weather-stripping protects, seals, cushions, insulates, silences rattles and fills voids. Has countless uses.



186-3 **CG510/810** 3/16" x 3/8" x 17'

186-4 **CG510/810** 3/8" x 3/4" x 15'

186-5 **CG510/810** 3/8" x 1-1/4" x 15'

Black Electrical Tape

Electrical tape is a good way to help protect and prolong all electrical connections. 3/4" x 60' roll black electrical tape. Top quality black plastic electrical tape C.S.A. 3/4" x 66 ft.



185-1 **18501** Electrical Tape, 10 Rolls Per Package

CARDED

0185-12 Electrical Tape Carded

Packing Tape

P.V.C. material extra strong for all purpose packaging. 2" x 60 yds.



185-2 **352CL** Packing Tape

INCOM MANUFACTURING GROUP

Awning Repair Tape

This emergency repair tape offers the utmost in durability, strength and unbelievable aggressive adhesive, even on damp surfaces. This product offers so much emergency protection that it should be carried as a vital part in any repair kit or tool box. Great for auto, boat, RV, hunting, farm equipment and backpackers.



185-4 **RE3848** Clear 3" x 15' Tape

185-7 **ST6016** Display W/8 Rolls

INCOM MANUFACTURING GROUP

Super Seal Emergency Leak Repair

Used for emergency repairs, stops leaks, forms solid rubber wrap. Strips clean, leaves no messy residue. Holds 100psi at 220 degrees F. Works wet or dry, greasy or dirty. 1" x 16' roll.



185-5 **RE3845ES** Super Seal 1" x 16'

GTE Engineering

Fusion Tape

WRAP-ID is a self fusing tape with good mechanical strength suitable for pipe repairs, sealing, harnessing and lashing. It is also suitable for electrical insulation as well as hundreds of other uses. No Adhesives-Bonds only to itself. Even if wet. Great for emergency repairs.



185-8 **WFP2012** 1" x 12' Wrap ID Fusion Tape

185-9 **WFD2036** 1" x 36' Wrap ID Fusion Tape

Teflon Tape

Used for Sealing most Threaded Type water connections. 1/2" x 260" per roll.



187-1 **18701** Teflon Tape

CARDED

0187-12 Teflon Tape Carded

Teflon Gas Tape

Used for sealing most Threaded Type LP Gas connections CGA Approved for LP Gas 1/2" x 260" per roll.



187-2 **18702** Yellow

CARDED

0187-22 Teflon Gas Tape Carded



Scrim Shield Mending Tape

New Scrim Shield is made from a black woven pressure sensitive polyethylene. Features a top side with a protective polyethylene barrier while the bottom has an adhesive made of high tack synthetic rubber for aggressive adhesion. 4" x 180'.



188-1 **BP4180** 4" x 180'

188-2 **BP6180** 6" x 180'

Plasti Dip

Plasti-Dip

A flexible, Synthetic, Multi-purpose Rubber Coating that exhibits excellent moisture, acid, alkaline, and abrasion resistance. Flexible coating that won't crack, chip or become brittle. Insulates against electrical shock, vibration, heat and sound. Provides safe non-slip comfort and control.



264-1 **11203** Aerosol 11 oz.

SYON Plastic Tank Repair Kit

Permanently mend pin holes, cracks, or tears in leaking tanks, ABS, polyethylene, plastic and metal. Complete kit includes epoxy, sandpaper, fiberglass cloth and application brush.



723-1 **AP90214** Repair Kit

SYON Fuel Tank Repair

Permanently mends pin holes, cracks or tears in leaking fuel tanks in minutes. Repairs holes up to 1" in diameter and cracks up to 5" in length. Complete kit includes epoxy, sandpaper, fibreglass cloth and application brush.



723-2 **AP90180** Fuel Tank Repair